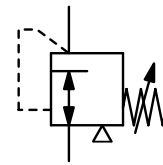


Description	Diaphragm vacuum regulator ensuring high precision in both vacuum and positive pressure range.		
Media	compressed air or non-corrosive gases		
Supply pressure	max. 17 bar		
Accuracy	response sensitivity: < 2 mbar		
Adjustment	by handwheel with locknut		
Air consumption	max. 2.8 l/min in positive pressure range		
Flow rate	70 l/min*1 in vacuum range, 900 l/min*2 in positive pressure range		
Gauge port	G¼ on both sides of the body, screw plugs supplied		
Mounting position	any		
Temperature range	-40 °C to 90 °C / -40 °F to 194 °F		
Material	Body: aluminium die-cast Elastomer: NBR/Buna-N	Inner valve: stainless steel and brass	



G¼
vacuum ... 0.14/10 bar

Dimensions				K _v value	Flow rate	Connection thread	Vacuum range	Order number
A	B	C	D	m³/h	m³/h*1 l/min*1	G	bar	
mm	mm	mm	mm					

Vacuum pressure regulator

supply pressure max. 17 bar,
with constant bleed

R250

68	184	20	65	0.78	4	70	G¼	-1 ... +0.14	R250-020
								-1 ... +0.7	R250-02A
								-1 ... +2.0	R250-02B
								-1 ... +7.0	R250-02C
								-1 ... +10	R250-02D

Special options, add the appropriate letter

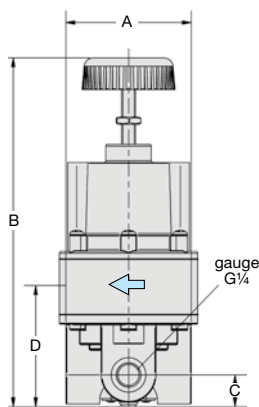
NPT	connection thread	R250-0..N
tamper-proof cap	made of aluminium, adjustment by screwdriver, total height 189 mm	R250-0..T



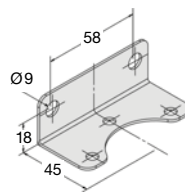
R250

Accessories, enclosed

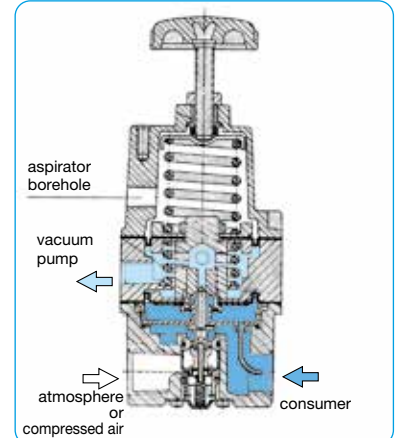
pressure gauge	Ø 63 mm, -1 ... 0 bar, G¼	MA6302-00
mounting bracket	made of steel	BW00-33



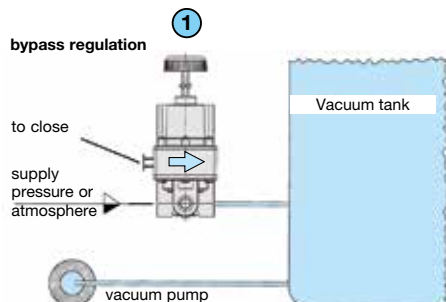
R250



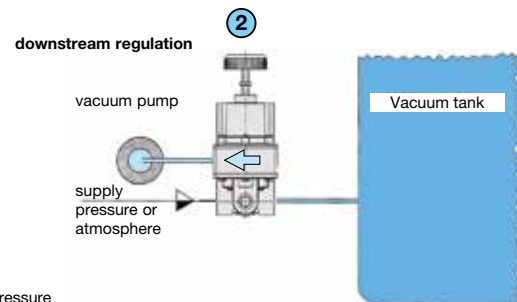
BW00-33



cross-section
connection for downstream regulation



- ① **Bypass regulation**
Upstream installation is preferred when rapid exhaust of a tank or system is required. That way the vacuum pump acts directly upon the tank and is not being throttled by the vacuum regulator.



- ② **Downstream installation** is preferred when rapid exhaust of a tank or system or over-pressure filling is required. The inlet pressure connection can optionally be left open to atmosphere.

*1 for compressed air at -0.98 bar supply pressure and 0 bar outlet pressure
*2 for compressed air at 7 bar supply pressure and 1.4 bar outlet pressure

Gauges: see chapter for measuring devices

PDF CAD
www.aircom.net

* Product group



Order example:
R250-020